

MANUALE D'ISTRUZIONI

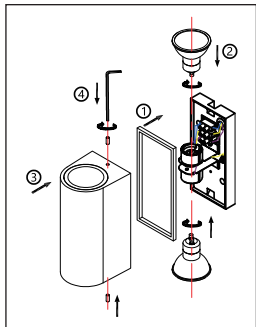
APPLIQUE DA PARETE UP&DOWN IP65



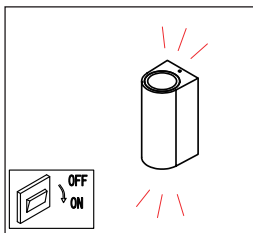
Specifiche tecniche:

	MISURE	MAX W	AC/Hz	FORMA	FINITURA	CLASSE	IK
IPC14RB	Ø80*150mm	2x11	AC 220V Hz 50/60	ROTONDA	BIANCA	II	06
IPC14RN	Ø80*150mm	2x11	AC 220V Hz 50/60	ROTONDA	NERA	II	06
IPC14QB	80*150mm	2x11	AC 220V Hz 50/60	QUADRATA	BIANCA	II	06
IPC14QN	80*150mm	2x11	AC 220V Hz 50/60	QUADRATA	NERA	II	06

Applique da parete UP&DOWN rotonde e quadrate in alluminio per lampade GU10 (non incluse). Disponibile in due finiture: bianca e nera. Resistente agli urti.



- Inserire la lampada e chiudere il prodotto con le viti.



- L'applique è pronta all'uso.

⚠ ATTENZIONE

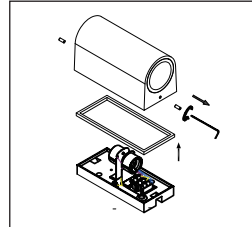
Si raccomanda di rivolgersi a un elettricista qualificato per installare il prodotto.

Le lampade 12V necessitano di un trasformatore (non incluso).

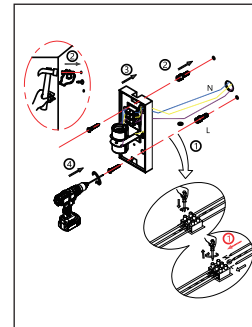
Staccare la corrente prima dell'installazione.

Usare dei guanti o un panno quando si maneggia la lampada o l'apparecchio, in quanto possono diventare caldi o causare ustioni.

MONTAGGIO



- Scollegare la corrente elettrica. Separare la base dell'applique.



- Effettuare i fori sulla parete e collegare i fili al morsetto.

Informazioni sul riciclaggio in conformità con le direttive RAAE e batterie



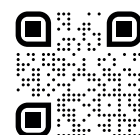
Simbolo sul prodotto



Simbolo sulla batteria

Solo Europa

Il prodotto/batteria è contrassegnato con uno dei simboli di riciclaggio sopra indicati. Questo indica che a fine vita il prodotto/batteria, dovrà essere smaltito/a separatamente in appropriati luoghi di raccolta e non con i normali rifiuti domestici.



IPERLUX®
www.iperlux.com
info@iperlux.com

INSTRUCTION MANUAL

UP&DOWN WALL APPLIQUE IP65

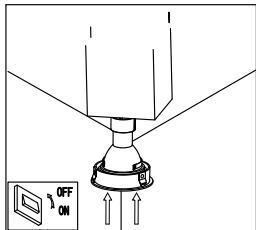


Specifications and Technical Data sheet:

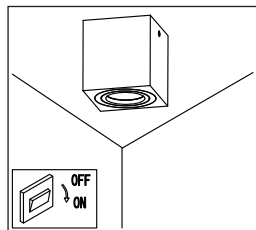
	SIZE	MAX W	AC/Hz	SHAPE	FINISH	CLASS	IK
IPC14RB	Ø80*150mm	2x11	AC 220V Hz 50/60	ROUND	WHITE	II	06
IPC14RN	Ø80*150mm	2x11	AC 220V Hz 50/60	ROUND	BLACK	II	06
IPC14QB	80*150mm	2x11	AC 220V Hz 50/60	SQUARE	WHITE	II	06
IPC14QN	80*150mm	2x11	AC 220V Hz 50/60	SQUARE	BLACK	II	06

Round and square aluminium UP&DOWN applique wall applique for GU10 bulbs (not included).
Available in two finishes: white and black. Resistant to impacts.

1



1. Disconnect the electricity. Separate the base of the applique.



2. Drill the holes on the wall and connect the wires to the clamp.



3. Insert the GU10 bulb and close the item with the screws.



4. The applique is ready to use.

⚠ WARNING

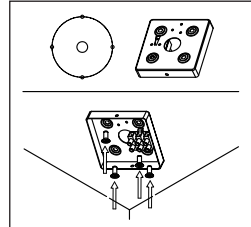
It is recommended to contact a qualified electrician to install the product.

12V lamps require a transformer (not included).

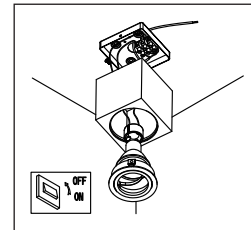
Turn off the power before installation.

Use gloves or a cloth when handling the lamp or the spotlight, as they can become hot or cause burns.

MOUNTING



1. Disconnect the electricity. Separate the base of the applique.



2. Drill the holes on the wall and connect the wires to the clamp.

2

Recycling Information in Accordance with the WEEE and Battery Directives



Europe only

The product/battery is marked with one of the above recycling symbols. It indicates that at the end of the life of the product/battery, you should dispose of it separately at an appropriate collection point and not place it in normal domestic waste stream.

